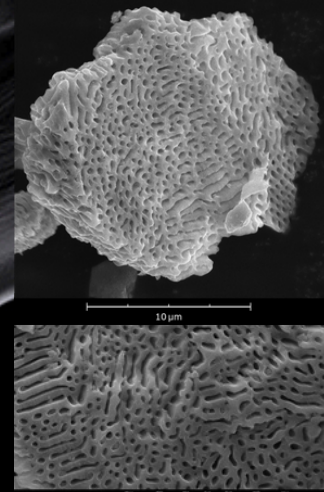


Product Data Sheet

E-magy ENS30™



ENS30™ Overview

E-magy's ENS30™ patented nanoporous silicon anode material offers **higher energy density** and **faster charging** for lithium-ion batteries in electric vehicles, consumer electronics, and drones. Produced with **reduced environmental footprint** using metallurgical silicon, our material is a **cost-effective, scalable** solution.

ENS30™ Details

- **Description:** Nanoporous crystalline silicon powder
- **Application:** Anode active material for Li-ion batteries
- **Product identifier:** CAS-No.: 7440-21-3; EC-No.: 231-130-8; REACH-No.: 01-2119480401-47

ENS30™ Key Benefits

- **Improved battery performance:** Faster charging, higher energy density and power density thanks to the nanoporous structure.
- **Compatible with existing manufacturing methods:** E-magy's technology integrates seamlessly with current battery manufacturing equipment, following standard industrial processes for micron-sized particles.
- **Cost efficient:** The use of an efficient casting process, standard industrial post-production methods, and low-cost, widely available metallurgical-grade silicon ensures E-magy's production remains cost-effective.
- **Sustainable and Scalable production:** Made from abundant, eco-friendly metallurgical-grade silicon, the anode material integrates easily with existing lithium-ion battery manufacturing. Our patented process supports scalability up to 1000 tons per year (8GWh per line), meeting the rising demand for high-performance batteries.

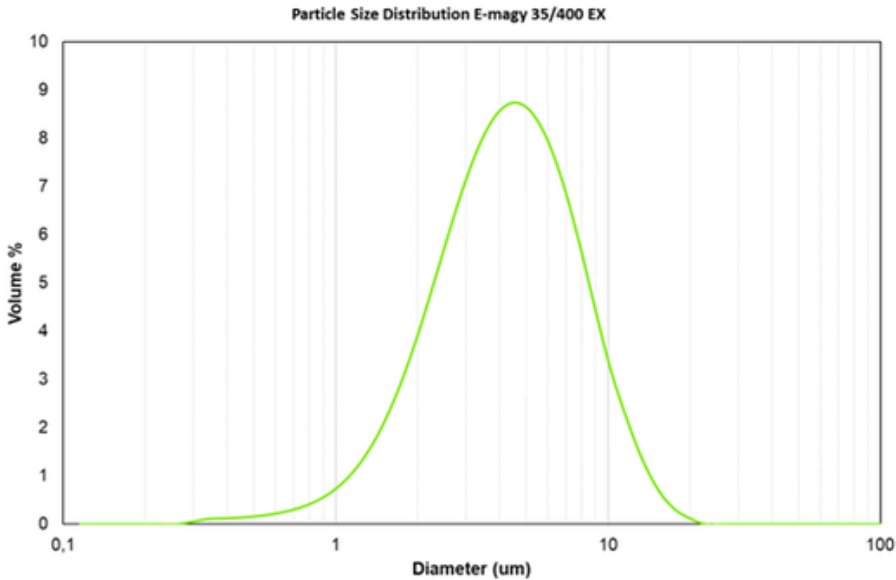
Operating Conditions

- **Storage:** Store in a dry place. Store in a closed container. Keep cool.
- **Handling:** Avoid generating dust during handling. Keep away from flames/heat.
- **Shelf life:** 6 months when stored in dry conditions.
- **HSE:** The product does not meet the criteria for hazard classification according to Regulation (EC) No 1272/2008 (CLP). For more information, please refer to the latest E-magy's Safety Data Sheet (SDS).

Product Data Sheet

E-magy ENS30™

Typical Physico-Chemical Properties



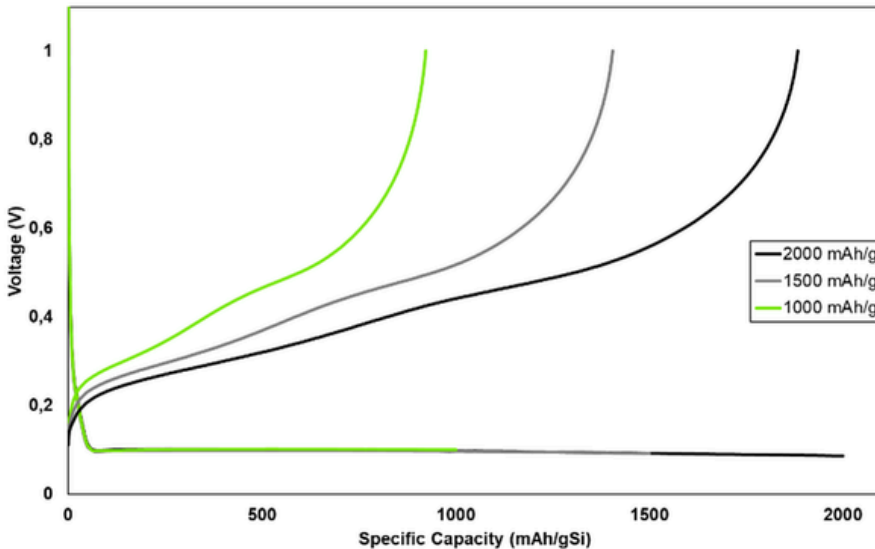
Particle Size Distribution Parameters*

*as measured by laser diffraction

	Typical	Min	Max
DV10	1.8 μm	0.8 μm	2.8 μm
DV50	3.9 μm	2.3 μm	5.5 μm
DV90	8.3 μm	5.0 μm	11.6 μm

Electrochemical Properties

Half Cell Voltage Profiles at Different Si Utilization Levels



	1000 mAh/g	1500 mAh/g	2000 mAh/g
INITIAL CE	92.29%	93.66%	94.09%

Chemical Analysis

Fe	<0.1%wt (X-ray fluorescence)
Cr	<0.5 %wt (X-ray fluorescence)
O	<1%wt IGF (Inert Gas Fusion)

Additional Information

For further information and sampling requests, please contact us via info@e-magy.com.

